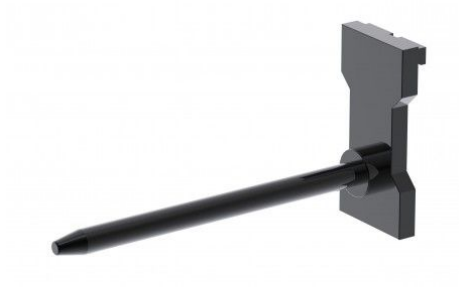




FEM3 spur 2000kg 3200mm long

ref. M103070301



Implement for FEM3 forklift trucks, with a load capacity of 2000kg and 3200mm long.

It is ideal for many types of machines.

1 950,00 € tax excluded

Características principales

Características ampliadas

Lug for FEM3 forklift trucks, with a load capacity of up to 2000kg.

This implement is ideal for many types of machines, it is an element with easy assembly, necessary for handling coils or tubes using the forklift. It will save you time and labor by lifting the material and moving it easily.

Dewclaws are generally used in industries such as paper handling and secondary industries.

FEATURES

- Load capacity: 2000kg
- Measurements (length): 3200mm
- FEM3

We have a wide variety of models and sizes. Consult us.